

RENZ

professional  
presentations

**RENZ**<sup>®</sup>

BINDING AND LAMINATING SYSTEMS

combinette  
combi V  
combi S  
combi Comfort  
combi E

**RENZ**<sup>®</sup>  
combi S



combinette  
combi V

Compact machine for paper formats up to size A4 [12"]. A combined two-lever system for manual punching and binding. The combi V has the additional feature of adjustable margin control.



combi S

For more advanced requirements. For all documents up to 34 cm [13.5"] binding width. A combined two-lever system for manual punching and binding. Adjustable margin control and disengageable punch pins for easy format adjustment.



combi Comfort

The basic electrical model for documents up to 34 cm [13.5"] binding width. Very comfortable electric punching and manual binding. Adjustable margin control and disengageable punch pins for easy format adjustment.

PLEASE OPEN

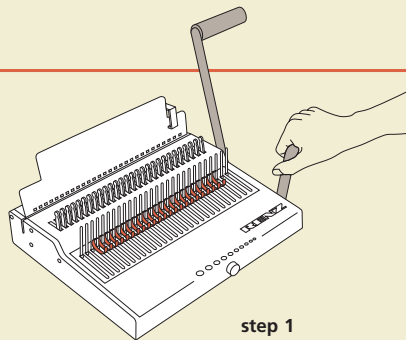


**ELEGANT PRESENTATIONS** There is no second chance to make a first impression. Publications are professionally finished with the versatile punch and binding systems of the combi series: proposals, agendas, company reports, financial statements, operating instructions, leaflets and many more. Add a transparent front cover and an elegant back cover to make every document look it's very best. Filing strips for hanging in a filing drawer are also available.

**VERSATILE APPLICATION** Pages turn easily and lay flat when open, exchange the pages as often as required, or add pages later – these are the advantages of plastic binding. The flexible combi system is suitable for documents up to 50 mm [2"] thick. The machines are available in EUROP or in US pitch.

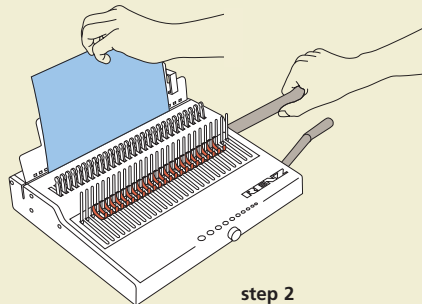
**COMFORTABLE OPERATION** Punching and binding is done with a minimum of effort due to the logically separated functions of the convenient two-lever system. The ergonomically correct design of the combi series is based on the ideal work flow: from top to bottom. This allows large numbers of copies to be produced most efficiently.

BINDING PROCESS

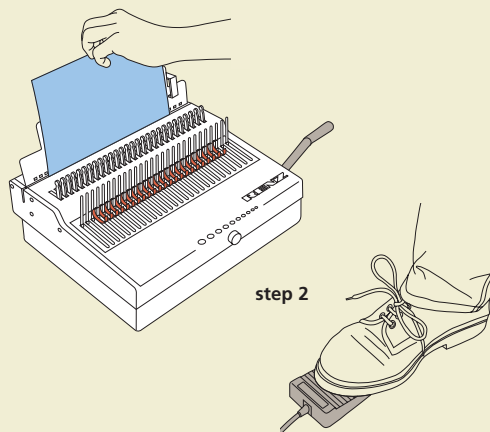


step 1

**step 1**  
Select the plastic comb, determined by the number of pages, and place it onto the machine. Use the adjusting knob to adjust the stop to the desired diameter. Open the rings with the comb retracting fingers until they reach the stop.

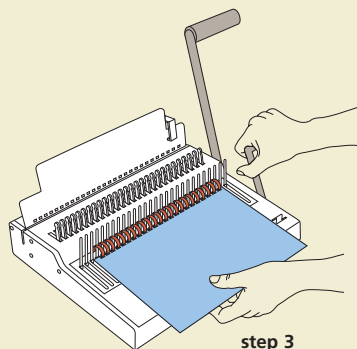


step 2



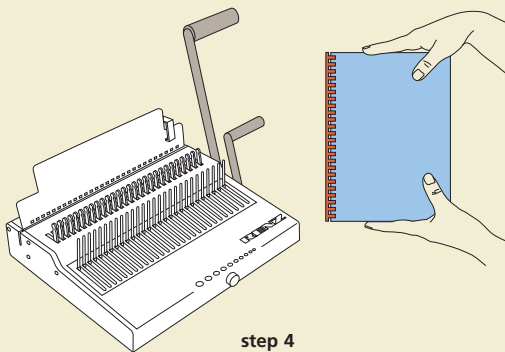
step 2

**step 2**  
The paper-pad drops vertically into the exact position. Specially hardened punching stamps will punch paper-pads up to 2.0 mm [.080"] – combi E: 2.5 mm [.100"] – and give precise punching results with little effort [manual versions]. With electrical machines, punching is done by pressing the foot pedal.



step 3

**step 3**  
Take the punched paper out of the machine and place it directly onto the open comb. Then close the comb. Separate punching and binding of the two-lever system makes the production of bound series very efficient, especially when thick books have to be punched in many sections.



step 4

**step 4**  
Finished. Take the bound book out of the machine.



combi E

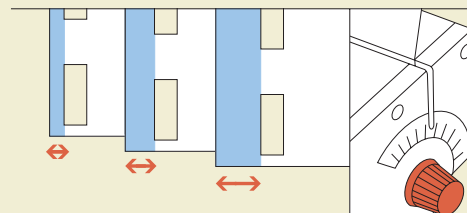
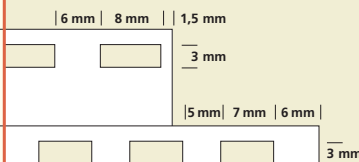
The professional solution for publications from small formats up to 34 cm [13.5"] binding width. A comfortable model with electrical drive and one lever. Punches up to 2.5 mm thickness comfortably by pressing the foot pedal. The binding capacity is up to 300 books per hour. Adjustable margin control and disengageable punch pins for easy format adjustment.

US-pitch

21 rings in A4, punches approx. 1.5 mm to the paper edge, plastic combs are available in six colors.

EUROP-pitch

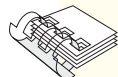
24 rings in A4, punches approx. 6 mm to the paper edge, plastic combs are available in six colors



Turn the adjustment knob to select margin. For thicker books, a larger margin is recommended to prevent the pages from tearing out.



## ACCESSORIES



Plastic binding combs are available in six different colors, for book thicknesses up to 50 mm [2"]. Available with and without printing. Transparent front covers, back covers in leather finish or in "chromolux", and filing strips.



Order number with RENZ address 4715200  
Order number without RENZ address 4715201

## MEASUREMENTS AND DATA – AT A GLANCE

	RENZ combinette RENZ combi V	RENZ combi S	RENZ combi Comfort	RENZ combi E
<b>length, width, height</b>	36, 49, 9 cm 14.2", 19.3", 3.5"	36, 49, 9 cm 14.2", 19.3", 3.5"	36, 50, 35 cm 14.2", 19.7", 3.8"	49, 50, 25 cm 19.3", 19.7", 9.9"
<b>weight</b>	9.5 kg [21 lb.]	10 kg [22 lb.]	27 kg [59.5 lb.]	36 kg [79.4 lb.]
<b>disengageable punch pins</b>	no	yes [all]	yes [all]	yes [all]
<b>punching thickness</b>	2.5 mm / 25 pages*	2.5 mm / 25 pages*	2 mm / 20 pages*	2.5 mm / 25 pages*
<b>smoothly adjustable edge distance</b>	no with combinette yes with combi V	yes	yes	yes
<b>binding thickness</b>	up to 50 mm [2"] 500 pages*	up to 50 mm [2"] 500 pages*	up to 50 mm [2"] 500 pages*	up to 50 mm [2"] 500 pages*
<b>binding capacity</b>	up to 250 books/hr	up to 250 books/hr	up to 280 books/hr	up to 300 books/hr
<b>up to max. size</b>	A4 30 cm [12"]	up to max. 34 cm [13.5"]	up to max. 34 cm [13.5"]	up to max. 34 cm [13.5"]
<b>number of rings</b>	EUROP-pitch 24 rings US-pitch 21 rings	EUROP-pitch up to 28 rings US-pitch up to 24 rings	EUROP-pitch up to 28 rings US-pitch up to 24 rings	EUROP-pitch up to 28 rings US-pitch up to 24 rings
<b>punching capacity</b>	up to 5,000 pages/hr	up to 5,000 pages/hr	up to 10,000 pages/hr	up to 20,000 pages/hr
<b>motor</b>			230V 50Hz / 90W on request: 110V 60Hz / 90W	230V 50Hz / 250W on request: 110V 60Hz / 250W
		*70/80 g/m <sup>2</sup> paper		